

Hair COLOUR To Go™

THE FUTURE of HAIR COLOUR

BEFORE APPLYING YOUR COLOUR-TO-GO HAIR COLOR:

- 1) CAREFULLY read all instructions and precautions prior to using any Colour To Go products. Industry language will be forthcoming for this section.
- 2) Perform a sample test 48 hours prior to applying color to discern desired effect and compatibility as allergies can develop from extended use of coloring products.
- 3) Make sure your hair is clean, free from residue, and completely dry prior to applying Colour-To-Go hair color.
- 4) If you have permed your hair or use relaxer, please wait 7 days and one shampoo after treatment prior to using Colour-To-Go coloring products for best effect.

PRECAUTIONS:

- 1) If there have been any chemical or physical alterations to your hair since your last coloring (e.g. relaxers, perm, or implants), please contact us as we may need to make alterations to your application instructions or change your color formula.
- 2) If you have any problems or questions with Colour-To-Go, please discontinue use and contact us immediately.
- 3) Be sure to wear a smock or old large towel and gloves, as Colour-To-Go hair colour can stain clothing.

**STEP
01**

Gather additional supplies (e.g. clock to time treatments, plastic/glass bowl, clips, towels, spray mister, mirror, and comb) along with your Colour-To-Go hair color kit.

**STEP
02**

Wear a smock or towel to protect your clothing and the plastic gloves from your kit to protect your hands when mixing and applying your Colour-To-Go hair color.

**STEP
03**

Mix your Colour-To-Go color in a plastic or glass container (NO METAL), according to your individual instructions.

**STEP
04**

Using the tint brush from your kit, divide your hair into sections. Begin by parting your hair in the center from your forehead to your neckline. If you have long hair, use a clip to hold your hair in place.



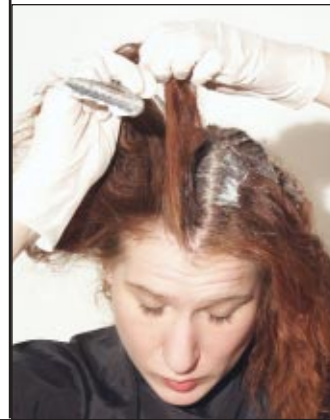
Although Colour-To-Go hair color is thick and should keep your hair parted, use of hair clips to hold sections of your hair in place will ease the process.

Apply the color to your root area by painting the color along the side and the part of each section. It is important to cover the outgrowth on both sides of the part.



TIP

Using the pointed tip-end of the tint brush, run it through the hair from the front to the back. With your other hand, gently lift the hair away from the scalp and separate. This will give



you a clean part and better control.

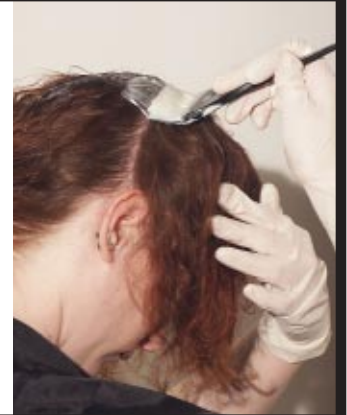
**STEP
05**

Once you've treated the center part, continue the application on the front part of your head by dividing your hair from side to side, and coloring your root areas at least once. Start on one side in front of your head; part off 1/2-inch sections and apply the color by painting it across the part with gentle pressure.



**STEP
06**

Continue the color application to the roots in 1/2" sections along the front part on one side of the head to the ear. Repeat the procedure in 1/2" sections down the part on the other side to the ear.



Hair COLOUR To Go™

THE FUTURE of HAIR COLOUR

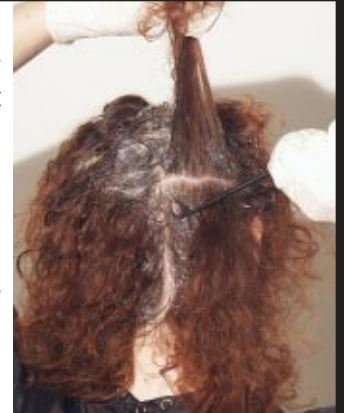
STEP 07

Once the roots on the front half of your head are covered (from the ears forward), apply some additional color to the root area on the front hairline to make sure this area has been covered completely.



STEP 08

Next, apply color to the roots on the back of your head. Like the front, start on one side at the crown or top of your head and work backwards towards your neck. Divide your hair into 1/2-inch sections, and apply the color to the root area along the part. This application will be at a slight diagonal from your crown to the nape of your neck.



NOTE

NOTE: Use a mirror to see the back of your head when applying the color to make sure you have covered the entire area. Complete coverage is achieved when the colour adheres to the sections above.

STEP 09

Complete coloring the roots on the back of your head by following this procedure on the other side of your head.

STEP 10

Once you've applied the color to all of your roots, set your timer according to the personalized application instructions for your roots. When the processing time for your roots is complete, mist your hair lightly with water. This will help to even out the porosity of your hair and help distribute the color evenly.

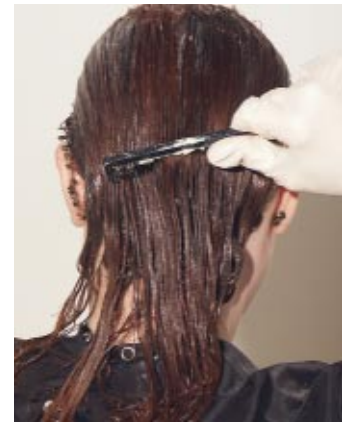
STEP 11

Use a comb to further distribute the color through your hair. Place the comb flat against your scalp and move it through your hair from root to end. You may add some of the remaining color to your ends by combing it through. Be sure to moisten your hair with color and not saturate it for best effect.



TIP

TIP: If you have long hair, try combing the coloring out from underneath the hair to get thorough coverage to the ends.



STEP 12

Once you have brushed the color through, set your timer again according to the personalized instructions for your ends to complete the color application process.

STEP 13

Once the color has been in your hair for your prescribed time, mist your hairline with water and work it around with your fingers, as this will make it easier to rinse thoroughly and remove any stains around your hairline.

STEP 14

Rinse, shampoo, condition, and style as usual.